

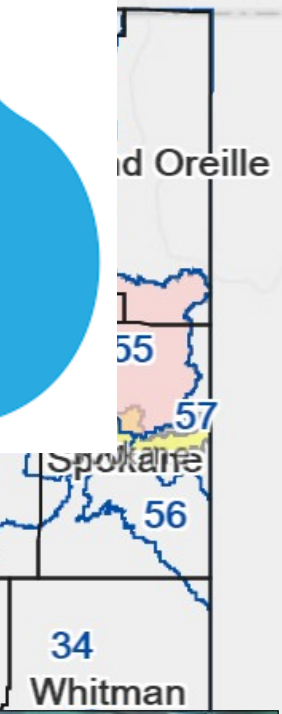
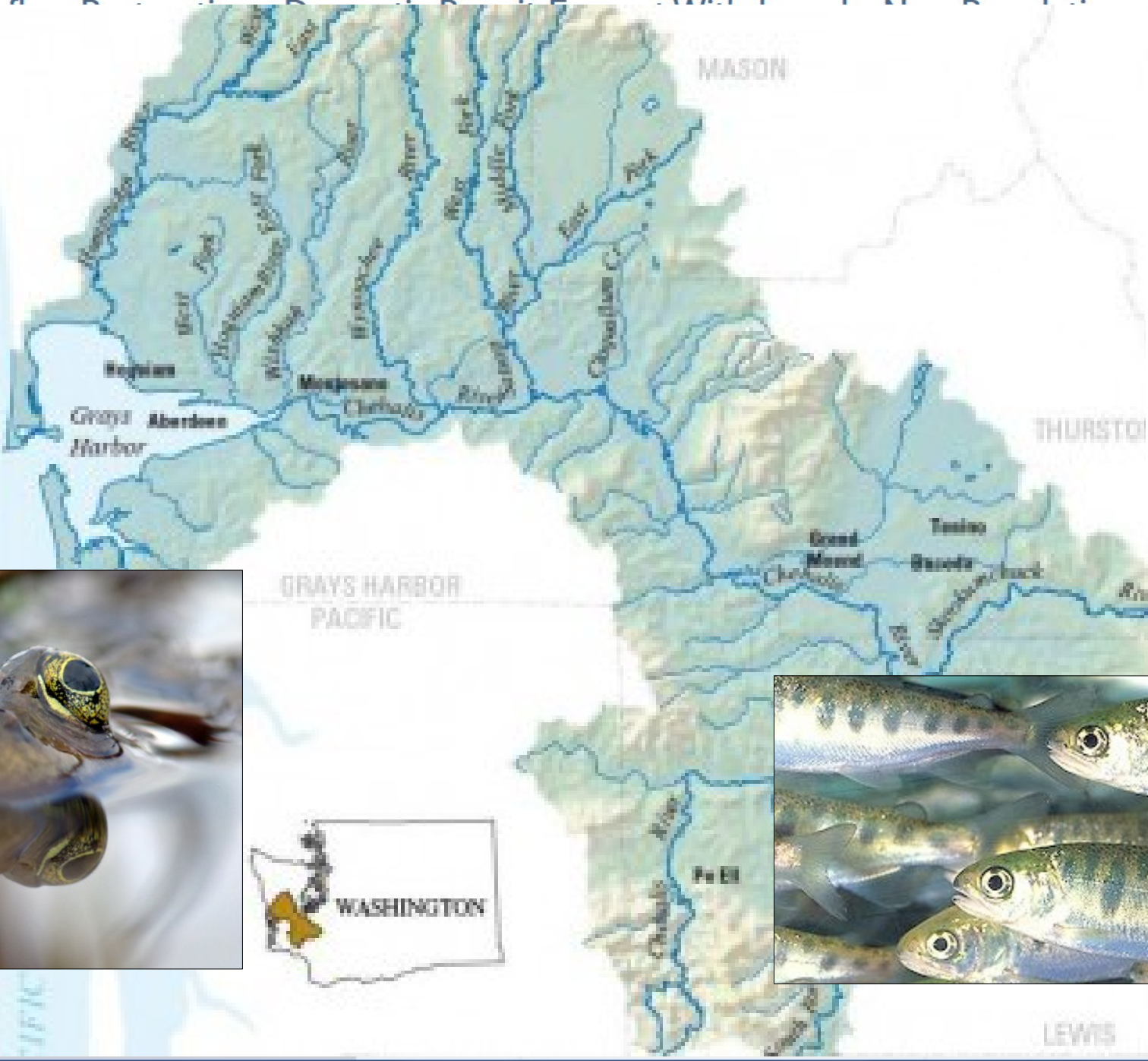


Chehalis Basin Partnership Watershed Planning: Addressing the Low End of the Hydrograph

American Water Resource Association
October 16, 2018
Kirsten Harma



Enter an Address or



Solid Foundation for Addressing 90.94

- **Existing Planning Unit** - Foundation of trust among stakeholders
- **Existing Watershed Plan** - a strong starting point
- **Synergies** - Multiple efforts in basin provide opportunity for holistic watershed management



Outline

- History
- Watershed Planning – V 1.0
- New Floats in the Parade
- How we are addressing ESSB 6091/ RCW 90.94



History

- **1997** -- Watershed Planning Act – Local groups need to determine how to manage their water resources locally
- **1998** – Chehalis Basin Partnership Formed
- **2004** – Watershed Plan Adopted
- **2011** – Detailed Implementation Plan Adopted
- **2011 – 2018** – “Watershed Planning” on the Back Burner



Solid Foundation for Addressing 6091

- **Existing Planning Unit** - Foundation of trust among stakeholders
- **Existing Watershed Plan** - a strong starting point
- **Synergies** - Multiple efforts in basin provide opportunity for holistic watershed management



Chehalis Basin Partnership



Planning Unit for WRIA 22 & 23



Steering
Technical
Committee
recommendation

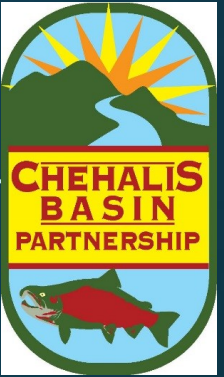
Discussion
by
Partnership

Accepted
Actions

Composition:

- 4 Counties
- 9 Cities
- 3 Water Districts
- 1 Port District
- Chehalis Tribe
- Non-governmental interests (agriculture, fisheries, environmental, business)
- State Agencies
- 4 Citizens (1 appointed for each county)

Chehalis Basin Partnership



- Financially self-sustaining, but currently low on resources
- Community education
- Partners implement plan elements on their own
- Forum for information sharing



Solid Foundation for Addressing 6091

- **Existing Planning Unit** - Foundation of trust among stakeholders
- **Existing Watershed Plan** - a strong starting point
- **Synergies** - Multiple efforts in basin provide opportunity for holistic watershed management



Chehalis Basin Watershed Management Plan

- Water Quantity - *Focus on when there is "too little"*
 - Water for agriculture
 - Water in private wells
 - Water for municipalities
 - Water in streams for fish
- Water Quality
- Habitat
- Planning
- Outreach



Chehalis Basin Water Quantity Questions



Is there sufficient water within the Chehalis to meet current and future needs?

Can we capture and store rain water to use in the dry season?

What will happen in a drought?

What will happen as the population grows and people start digging more wells?

Where are exempt wells and how much water are they using?

Where do wells tap into a deep aquifer, and where do they connect to shallow aquifers?

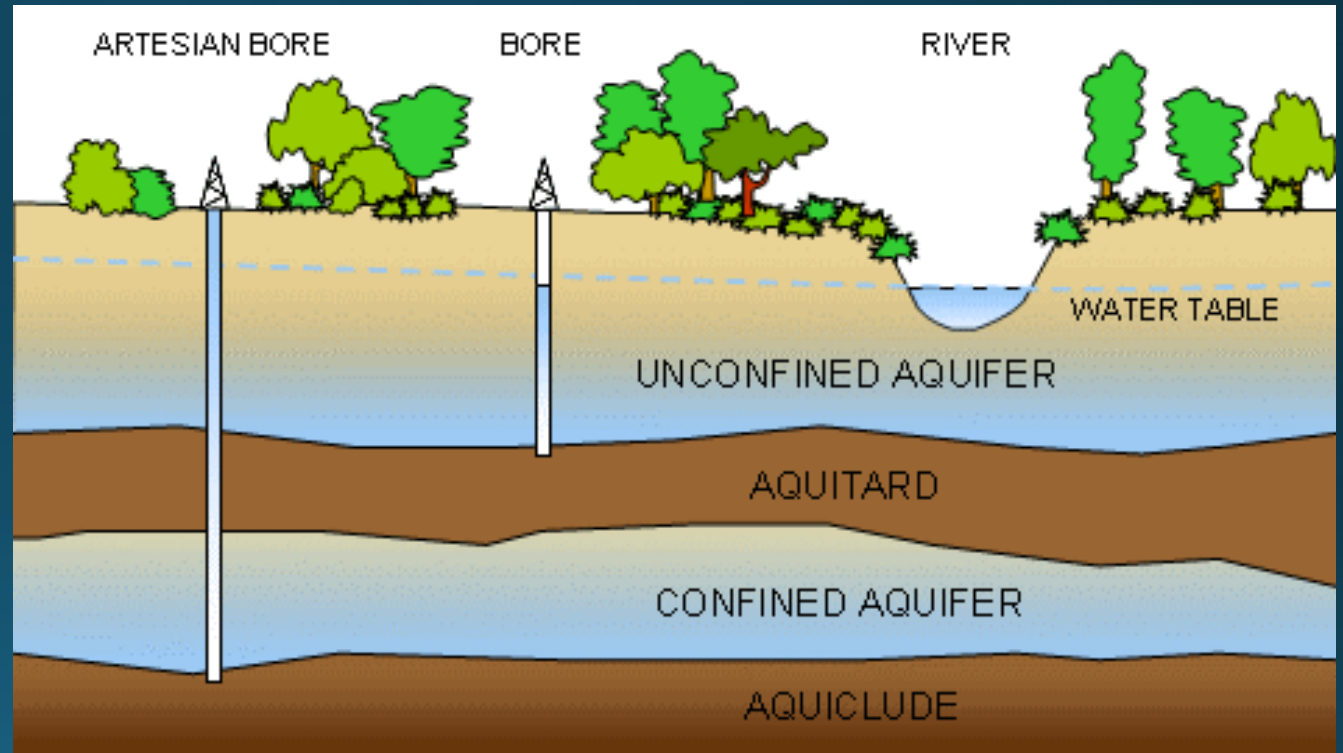
What policy tools are available to help us meet future water needs??

stream for fish?



Plan Recommendations - Exempt Wells

- Conduct a groundwater study that provides the information necessary to address the hydraulic continuity issue
- Explore deep aquifer use for household use
- Conduct hydrogeologic studies in known problem areas
- Change timing of groundwater withdrawals to benefit streamflows
- Develop education programs



Solid Foundation for Addressing 6091

- **Existing Planning Unit** - Foundation of trust among stakeholders
- **Existing Watershed Plan** - a strong starting point
- **Synergies** - Multiple efforts in basin provide opportunity for holistic watershed management



Water “Issues” in the Chehalis Basin



Too Little

- Water for People
- Water for Fish

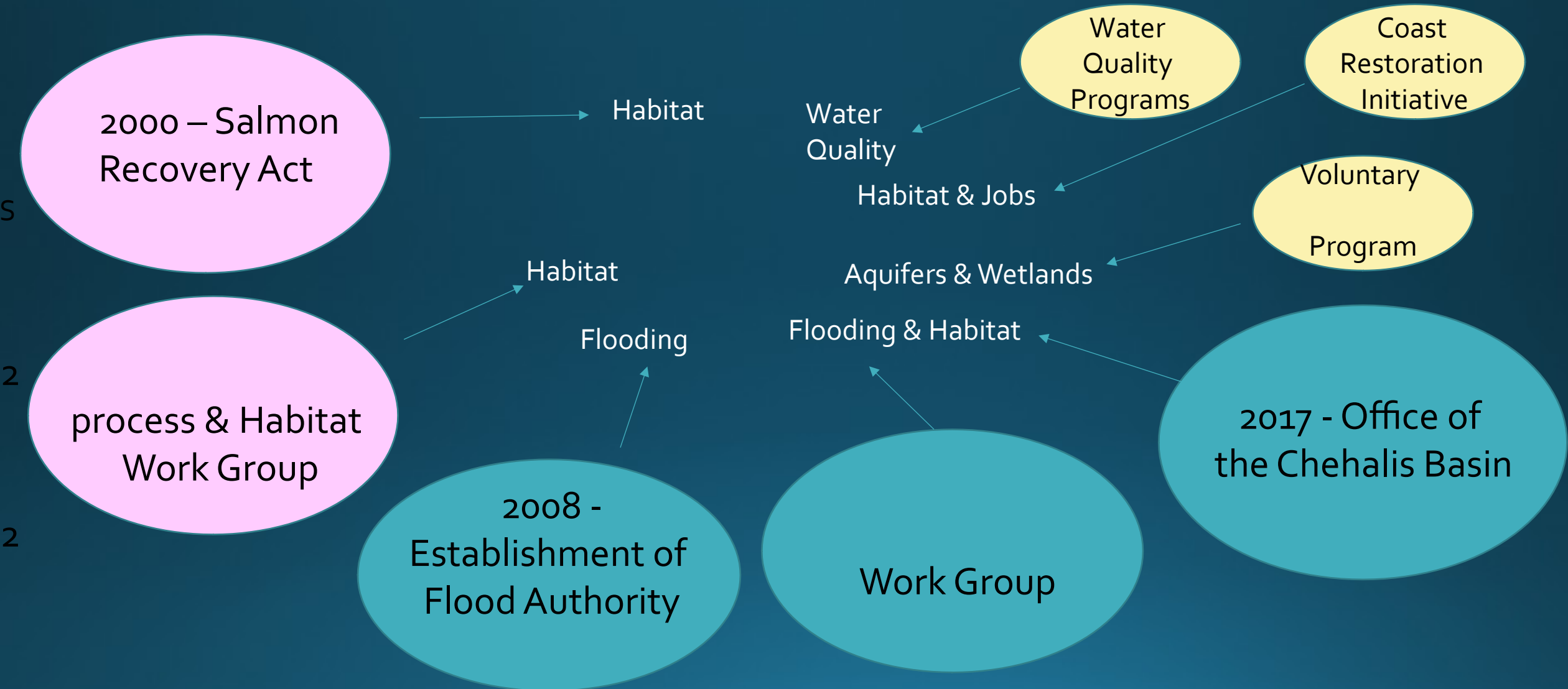


Too Much

Flooding



New Floats in the Parade



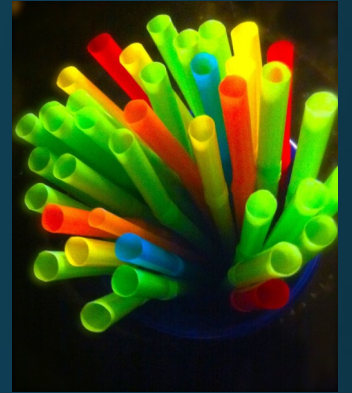
It's all one water...



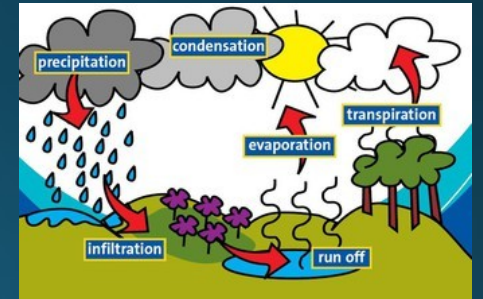
Steps to address 90.94



Where will new “Exempt wells” be drilled and how much water will they “consume”?



Where, and what kinds of projects, can get more water back in streams?



Demonstrate Net Ecological Benefit

Steps to address 90.94- Governance



- Invited inactive members to re-engage
- Invited Tribal participation
- Educating new members on history of Chehalis Basin Partnership and Watershed Planning
- Workshop: Improve governance structure and build trust
- Initial timeline with deliverables
- Determining decision-making– keep existing consensus-base or develop new roles in relation to this effort?
- Forming technical committees outside of voting membership

Steps to Address 90.94– Desired Outcomes



- “Fair and equitable plan that takes into account all interests”
- “Allowing basin partners to be in charge of own decisions”
- “A plan that builds on past work”
- “Use the opportunity to identify projects that would not come out of an Ecology “rule-making” “
- “Identify opportunities to leverage process and other project funding”
- “Projects that address water quantity and water quality concerns”
- “A plan that we can all celebrate together”

Conclusion

- Low end of hydrograph (low summer instream flows) is still an important issue in the Chehalis Basin that hasn't been comprehensively addressed since the end of Watershed Planning V. 1.0
- We are very excited by the opportunity 90.94 provides and want to take opportunity to go above and beyond the law's requirements to improve "water for people and water for fish" in the basin.





Thank you!

We welcome your suggestions and ideas for our Watershed Planning in the Chehalis!

Contact:

Kirsten Harma

Watershed Coordinator

(360) 488-3232

kharma@chehalistribe.org

