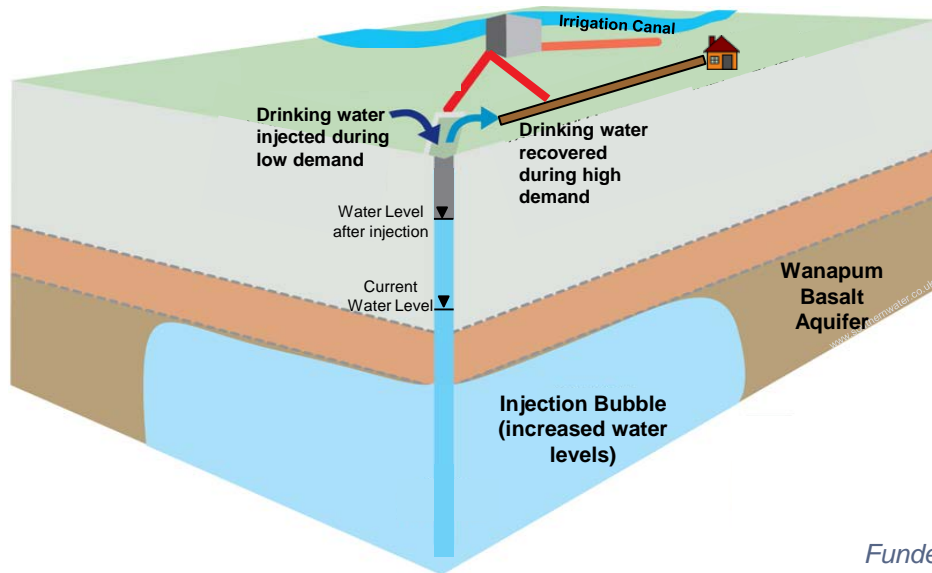




Developing an ASR Program with Limited Source Water Options: *City of Othello*

WA State AWRA Conference
October 26, 2016



Presented by
Andrew Austreng



Funded by Office of Columbia River Grant No. WROCR-VER1-Othell-00005

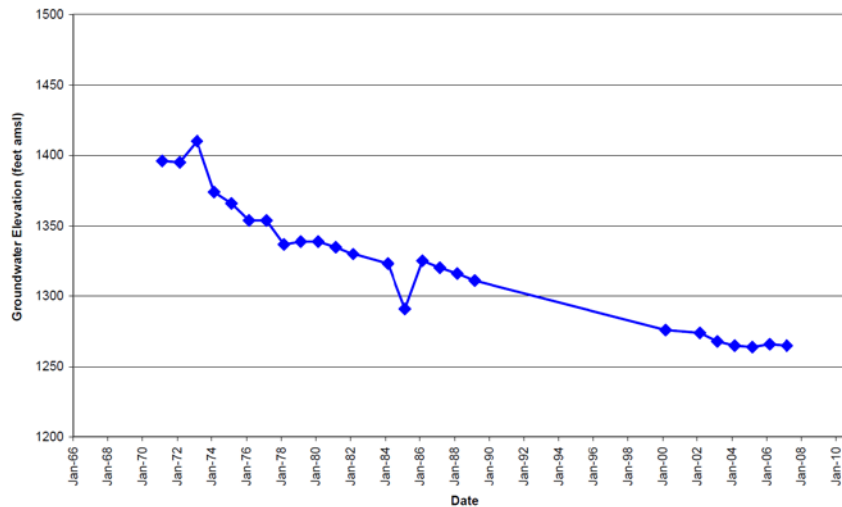
earth + water

Othello Water Supply Background

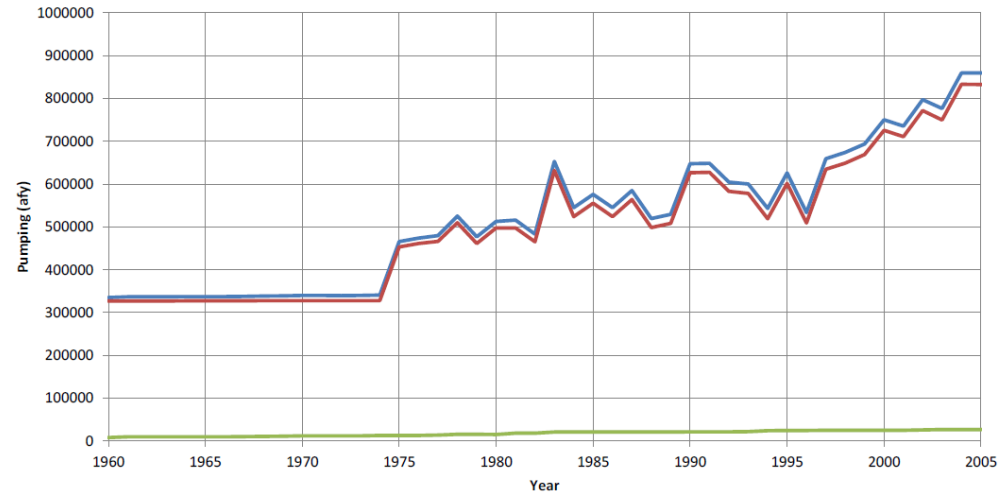
■ Othello Currently Relies on 8 Wells in Wanapum Basalt

- Recent Water Level Declines ~ 2ft/yr
- Reduced Wellfield Capacity ~ 200 gpm/yr

Groundwater Levels in Wanapum Basalt



Estimated Local Pumping (GWMA)

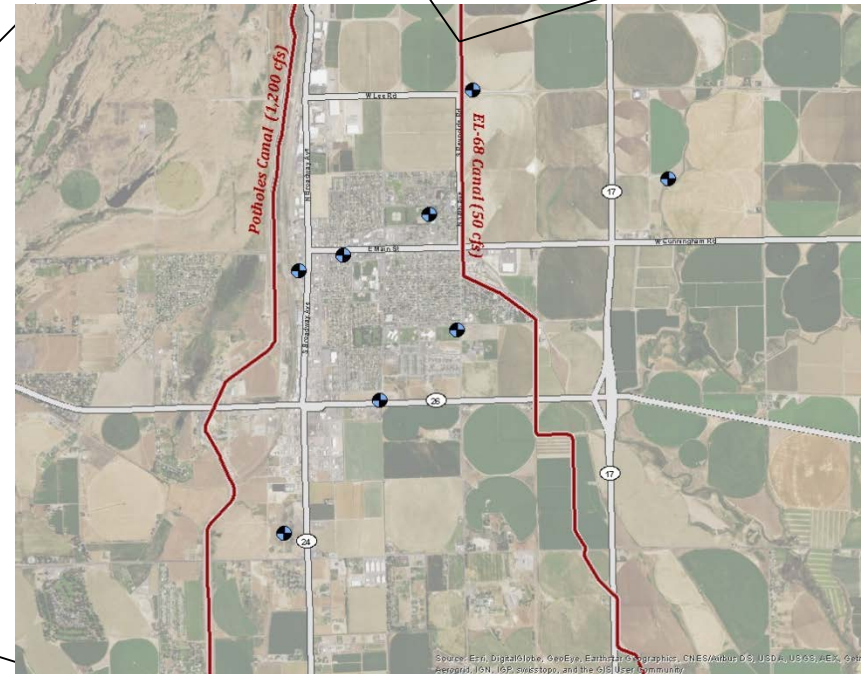
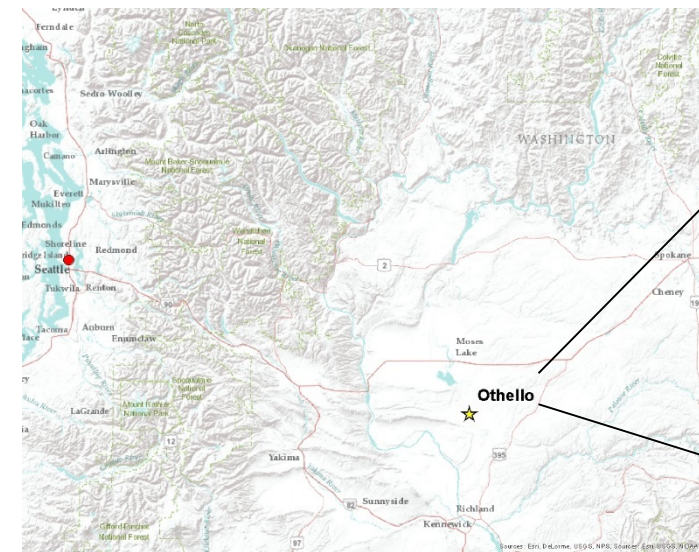


Figures from: *Groundwater Level Declines in the Columbia River Basalt Group and their Relationship to Groundwater Recharge*, GWMA Report, June 2009

Pathways to ASR

Limited Surface Water Supply

- **Irrigation Canals**
Available April – Oct
- **Two Pathways Authorizing Use**
 1. M&I Contract with Reclamation
 2. Conveyance of Non-project Water



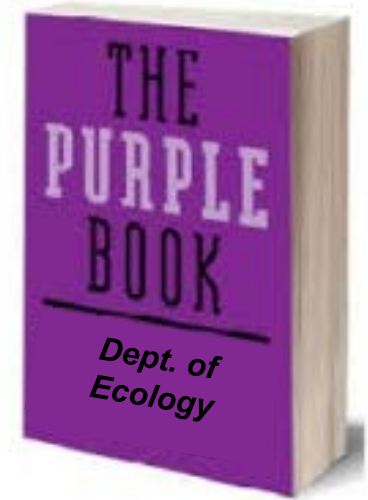
Reclaimed Water for ASR

Class A Available from Industrial Food Processors

- ~ 3,300 afy from combined processors

Authorization for Use

- 1997 Regulatory Standards in-play
- WAC 173-219 in-progress (*Reclaimed Water*)
 - Draft Purple Book: *Reservoir Permit Not Needed*
- WAC 173-200 (*Antidegradation*)



Questions?



Andrew Austreng

aaustreng@aspectconsulting.com

206-838-5843